

EXPERTIZERS : FUNCTIONAL ANNEXES : ADMINISTRATION



ADMINISTRATION: MODEL DISTRIBUTION AND ITS UPDATES

Expertizers Copyright 2006-2009

ADMINISTRATION OF DISTRIBUTION MODELS

For the manager of the model

PURPOSE

- Prepare a model distributed to users with a status of limitation:
 - Limiting the model to only functions batch (batch side) and direct entry (quotation side). Common to status 2 and 3.
 - Obscuring the display of the tree rules (status 3) or not (status 2).
- The remote computers have been equipped with software Expertizers and a distributed model (object of the procedure). Thereafter, distributed models will be powered by simple updates.
- The procedure for updating the distributed model is described at the end of the item (page 9).
- One can overcome the function of preparing the distributed model by installing a rather Expertizers ' runtime ' version on the users. It produces the same effect as the clamping in 3 status while using a status model 1 (= all administrator functions).
- NB: All main screens are described in the item. however, some secondary screens of comments were deliberately deleted. The name of the model taken as an example in the item is called example.ex1, initially in status 1 (administrator)



PREPARATION OF THE DISTRIBUTED MODEL

Step 1: Data backup. Export function

Instead of the export you can do a full backup of the model under windows (copy / paste)

Export Data Model

Functionality

This procedure is very useful to save the whole main data structure of your model.

It saves the variable definitions and the entity descriptions (entities, operations, objects, rules, activities).

So, in case of any new version of Expertizers, there is a mean to save your data, and then to re-load in any other structure required by the new version, according to the instructions given by the publisher.

< Previous Next > Cancel

File name

Export file name :

\\expertizers\Data\exemple.txt

Expertizers Data Model File

Enregistrer dans : Data

- Documentation
- Model
 - TEST_1
 - TEST_2

Nom du fichier : exemple Enregistrer Annuler

Type : Tab separated (*.txt)

Export Data Model

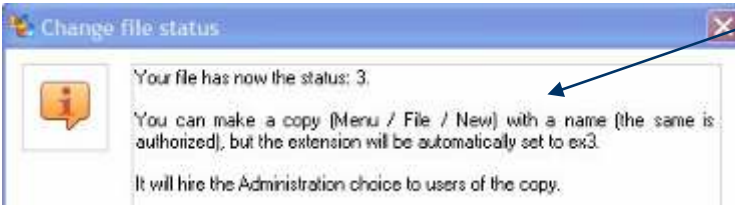
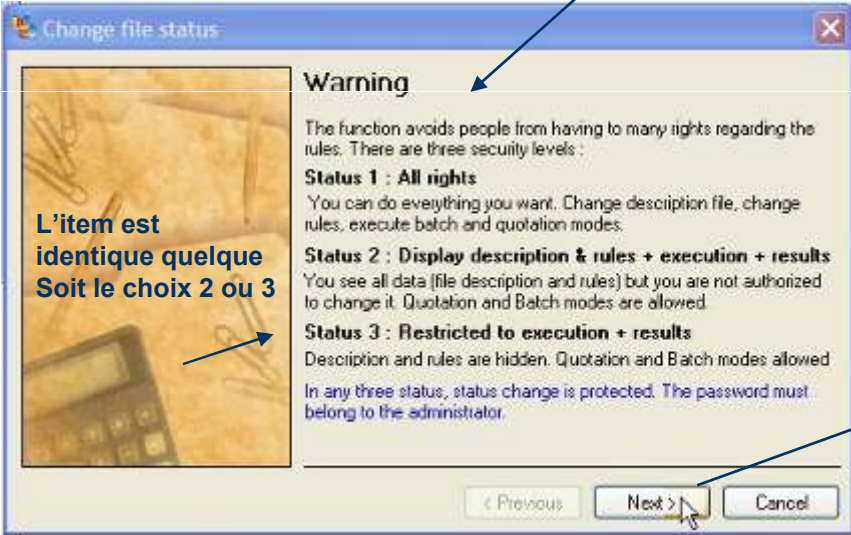
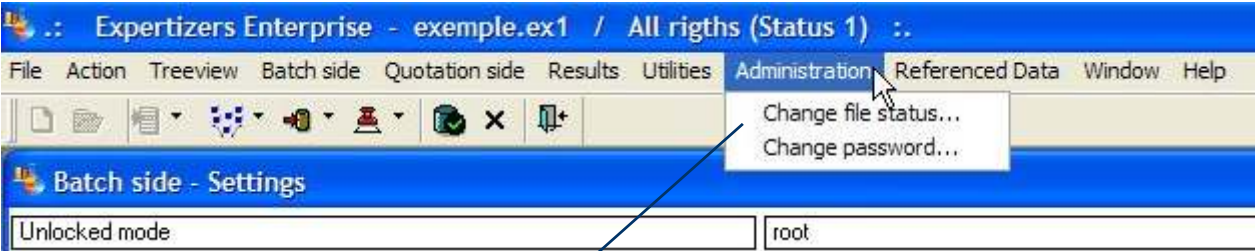
File successfully generated.

Txt format concentrates all the tree data of the model on only a few K bytes, rechargeable by import.



PREPARATION OF THE DISTRIBUTED MODEL

Step 2: Changing the status of the model



PREPARATION OF THE DISTRIBUTED MODEL

Step 3: Changing the password of the model to distribute

The file is passed example.ex1 status 3. The menu choices have become more limited. Utilities in the choice function export is now unavailable.



With extension ex1 and status 2 or 3, the administrative branch is still available. With other extensions ex2 and ex3, administration Branch is hidden.

At this step, the administrator **must note the new password** given to the distribution file. **If you forget the password** the only solution will be to reload (Utilities / import) your last saved data (Utilities / Export) from a copy of the blank template model_v1.ex1



PREPARATION OF THE DISTRIBUTED MODEL

Step 4 Optional, automated updates

This phase (optional) allows you a subsequent automatic distribution of updates on distributed models. It can be set up by this way (now) or later directly on each distant distributed model (not so easy as user needs to know the procedure).

Enter the path to the import file available on the distribution server (it must already be installed when recording it)

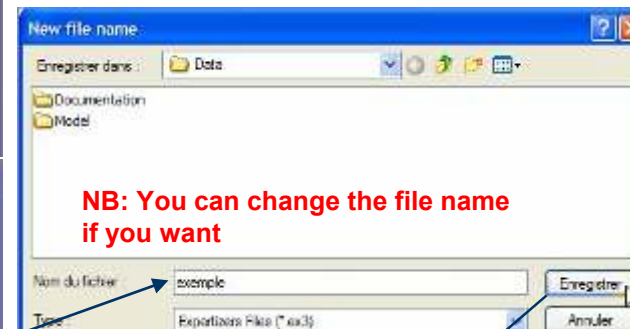
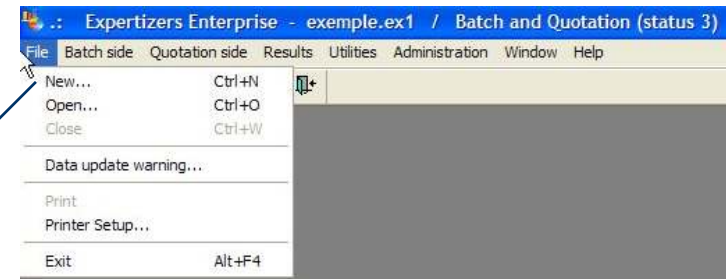
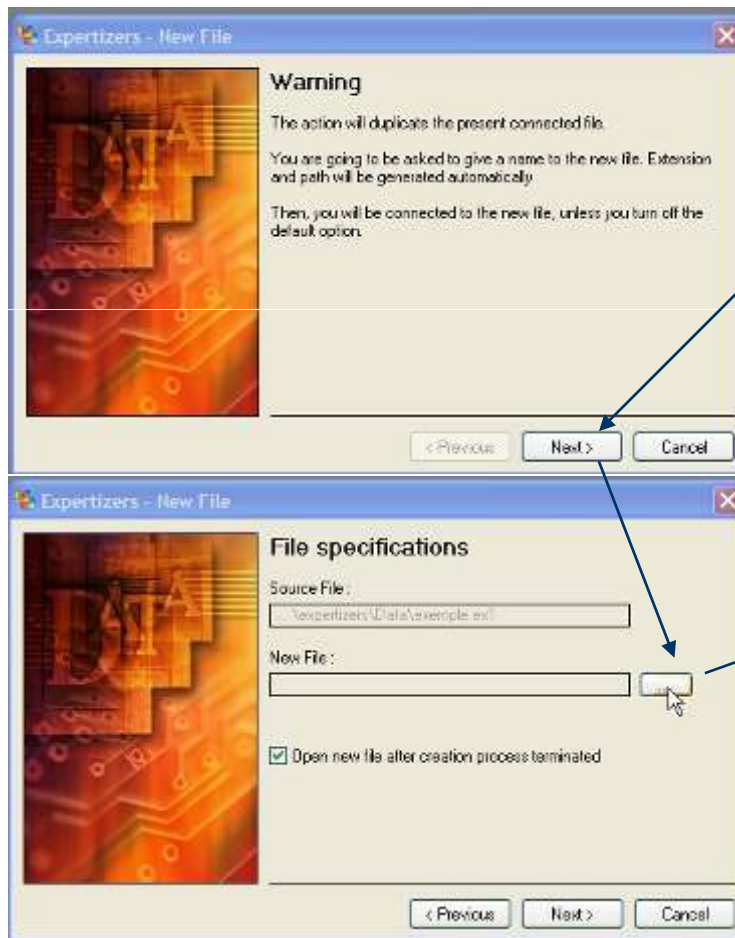
Automatic update is installed (bookmark)



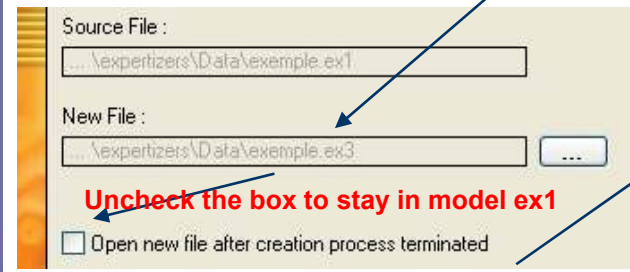
PREPARATION OF THE DISTRIBUTED MODEL

Step 5: Copy of the model with its extension = status

The model that is still ex1 extension, must be copied to the extension in consistency with the status. It will be distributed with this new extension.



NB: Instead of this procedure, you can leave Expertizers. Then make a copy under windows (example.ex3 from example.ex1). Then come back to Expertizers and execute Step 6 on next page.

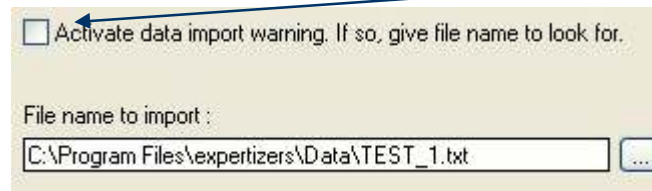


PREPARATION OF THE DISTRIBUTED MODEL

Step 6: Restoring settings from the administrator

The model **example.ex1** of the administrator must return all the properties it had at the start of step 2.

- Restore the status to value 1: see Step 2 by providing the last password used for the distributed model
- Reactivation of the password of the administrator: see step 3
- If 'File / data update warning' has bookmark: see step 4 (and disable only the check)



AVAILABILITY OF UPDATES TO DISTRIBUTED MODELS

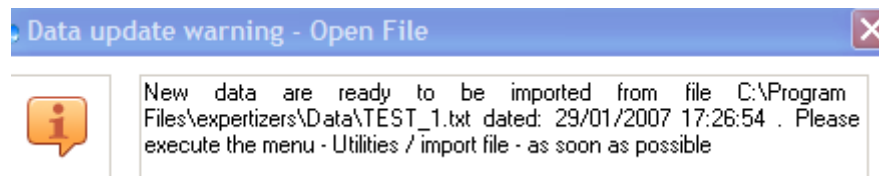
The administrator decides when to provide updates to the distributed model.

The preparation is simply to export data from its model of administrator (see step 1)

According to the method of distribution to users, the administrator operates as follows:

Manual Transmission: by mail or by any other means, send the txt export file. Upon receipt, users use the import function to update their model.

Automatic Mode: Set the txt export file to the directory of the distribution server, replacing the previous one. At the next connection to their model, users will receive the following message, encouraging them to start as soon as possible (in the course immediately) the import function.



Warning

This document is brought to you by DB.SOFTART.SERVICES. (« DB »).

This document and its contents are the product of research and important development led by DB.

They are presented solely in order to allow you to evaluate some of EXPERTIZERS software's capabilities
You must process the content of this presentation and any other information or document, in connection with the solutions presented during any lecture, as confidential and exclusive property of DB.

And receiving the information, you agree to use the information for the sole purpose of evaluating your own account for the software's capabilities Expertizers to maintain confidentiality and not to transmit to anyone, all or part of the information without prior written permission of DB.

- DB.SOFTART.SERVICES
Didier RICHE
Software Publisher
+33 (0)6.63.92.20.60
+33 (0)1.47.34.40.23